



Netherlands Enterprise Agency

Collective approach to AECM – a Dutch example

Caernarfon, 12 March 2024

René Stiphout



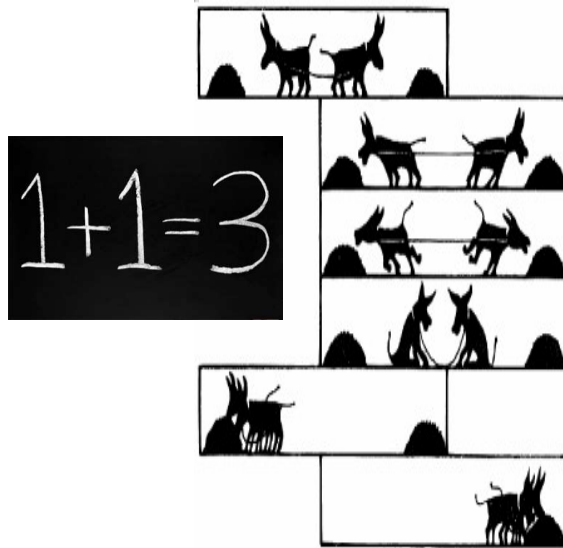
Main goals AECM

- › Contribute to the increase of the number and types of animals and plants in the agricultural environment
- › Contribute to the improvement of water quality
- › Contribute to the improvement of climate (e.g. capturing CO₂, absorbing water peaks/drought)





Our approach to agri-environmental delivery

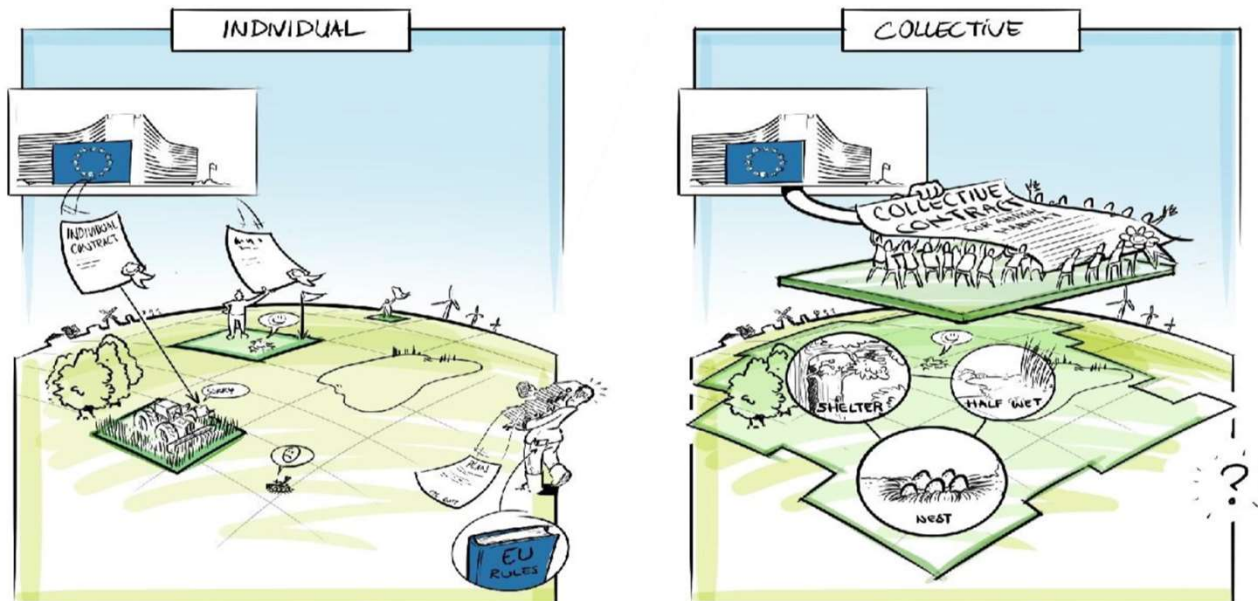


- Focus on creating good habitat conditions for rare species (territorial based) instead of commitments on farm level;
- Certified collectives as beneficiaries in order to:
 - enhance effectiveness;
 - improve efficiency;
 - improve knowledge-skills;
 - make better use of local skills and energy;
- Improve policy monitoring: goals versus commitments;
- Flexibility to respond to the dynamics of nature.





Individueel beheer versus ANLb beheer





AECM-regulation, design



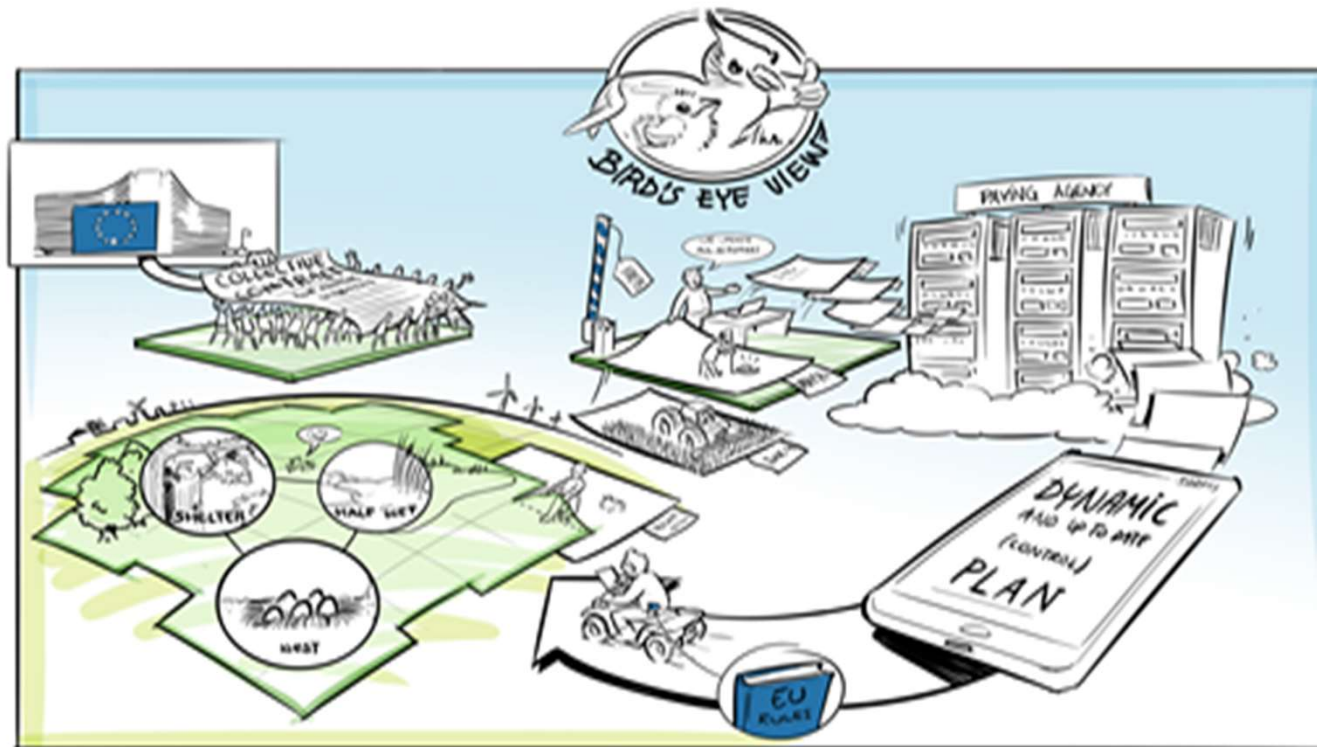
40 collectives with
each more than 100
participants

- Area-oriented
- Provinces designate areas
- 40 existing, nationwide collectives
- Before 2023: focus on biodiversity, depending on farmland
- From 2023 onwards: Expanding goals: climate and water
- Expand areas
- Growth from over 100,000 ha to 130,000 ha
- Gradually increasing the available budget.
- Different habitats
 - open grassland
 - open arable land
 - dry veining
 - wet veining
 - water management areas category water





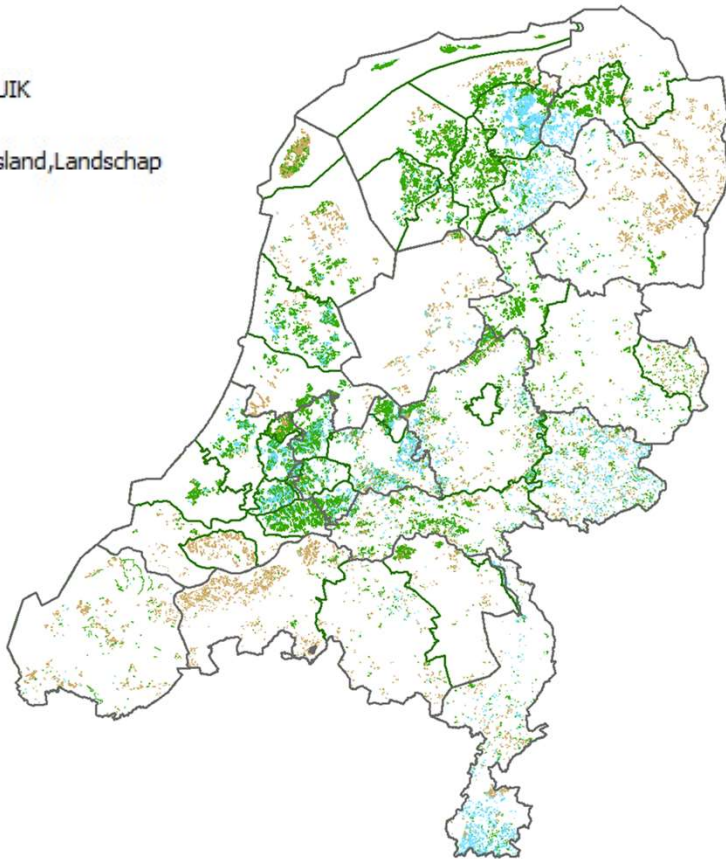
A collective approach on a landscape level





GRONDGEBRUIK

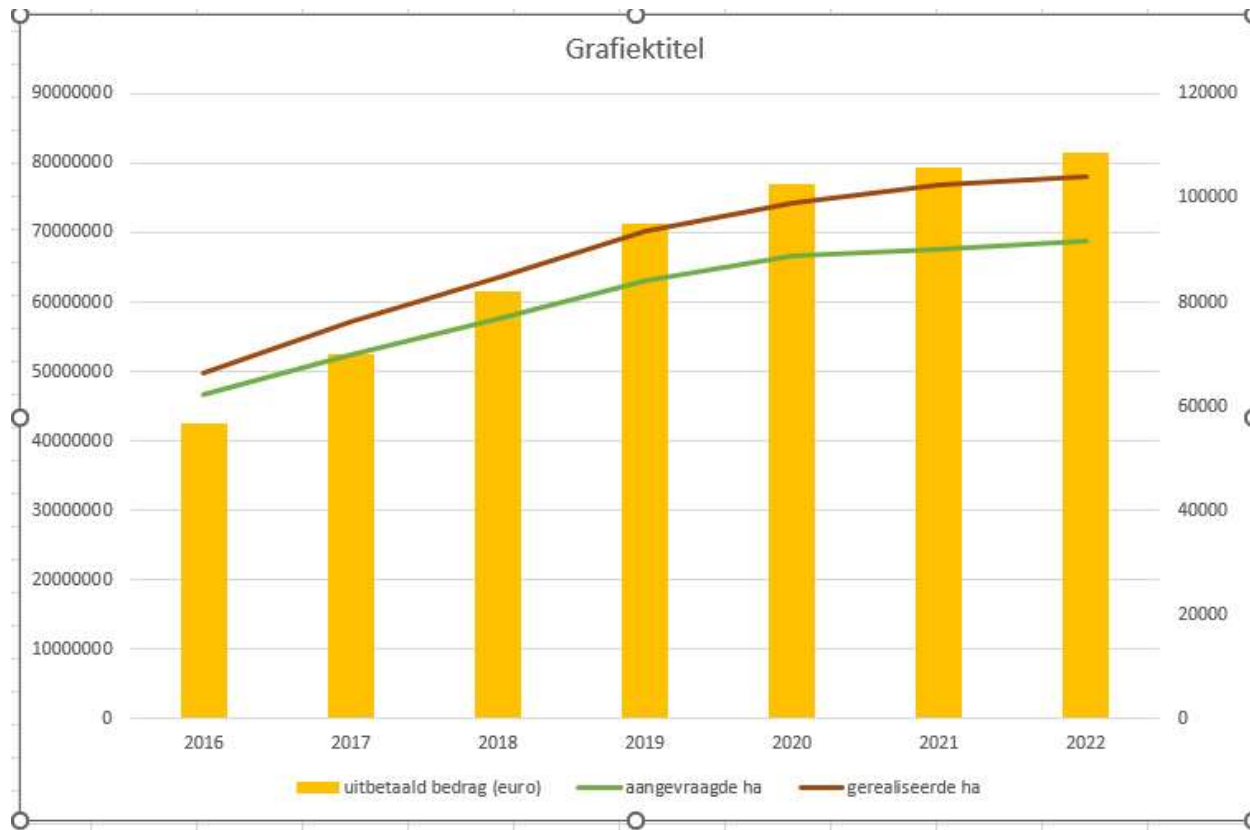
- Bouwland
- Bouwland,Grasland,Landschap
- Grasland
- Landschap



Annual management 2023

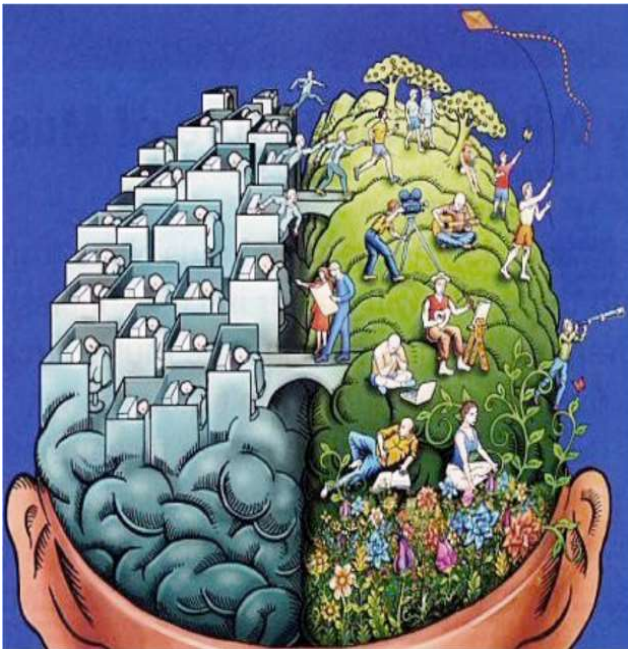
- Total of 11.600 participants
- 373.000 activities on 184.000 parcels in 155 habits
- Netto 116.754 hectare, bruto 140.476 hectare







Future Challenges



- Balance between regional self-regulation and 'governmental straightjacket';
- Regional coöperation between farmers and conservation organisations;
- A better connection between the two pillars in the CAP;
- Improve the result-based component of the scheme.





Questions?

Thank You!





Vershil ANLb versus SNL-a

ANLb (collective)	SNL (individual)
Collective is applicant	Administrator parcel is applicant
Management on habitat level	Management on parcellevel
Managementactivities	Management package
Possebilaty changes during year	No changes during year
Yearly managementplan / Payment request / accountability	Only payment request
Buffer (area and financial)	No buffer





Intern ge